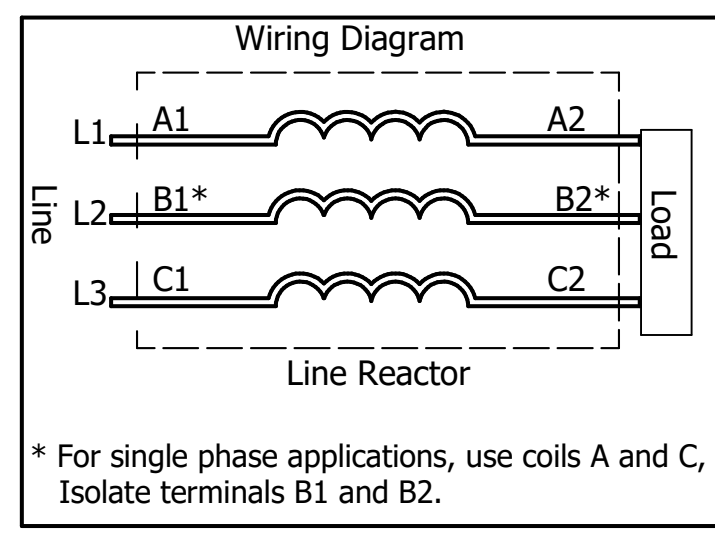
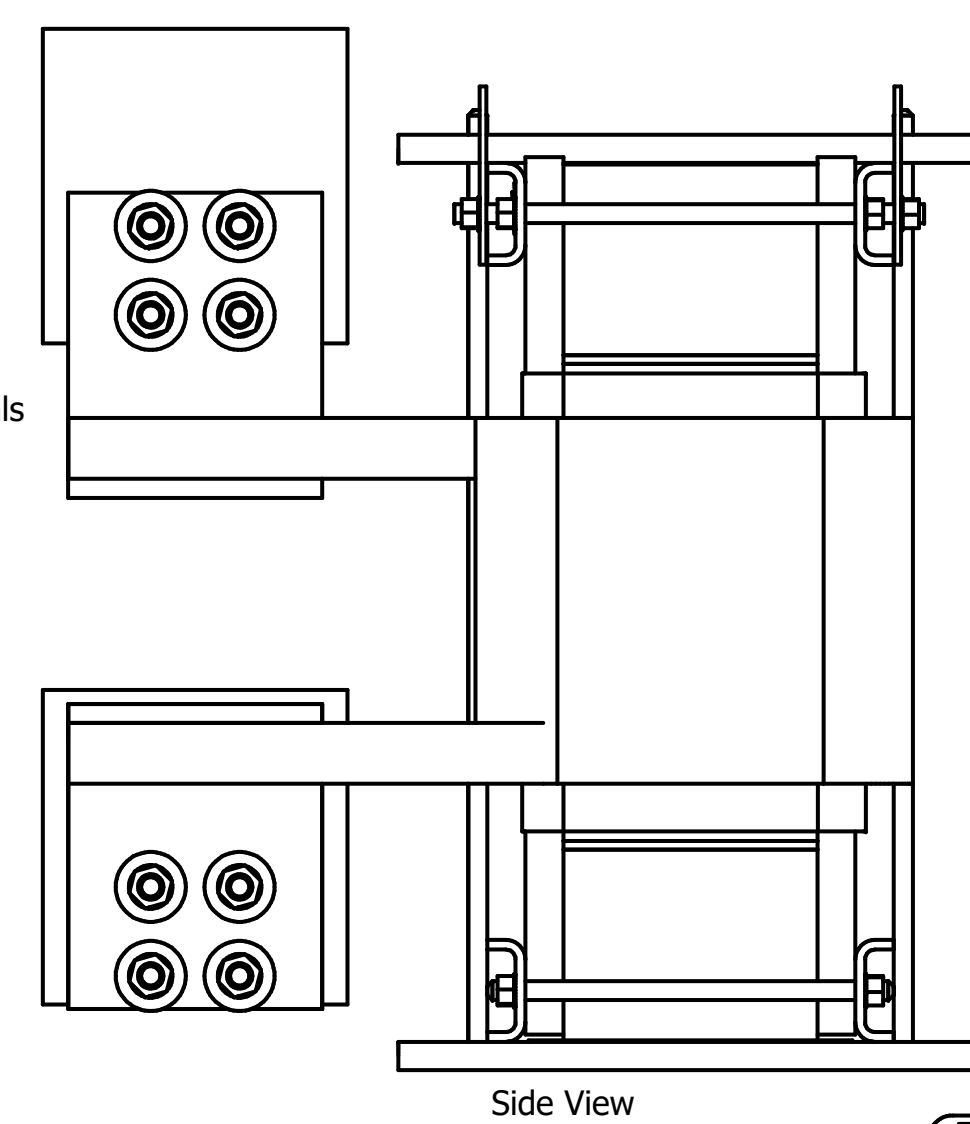
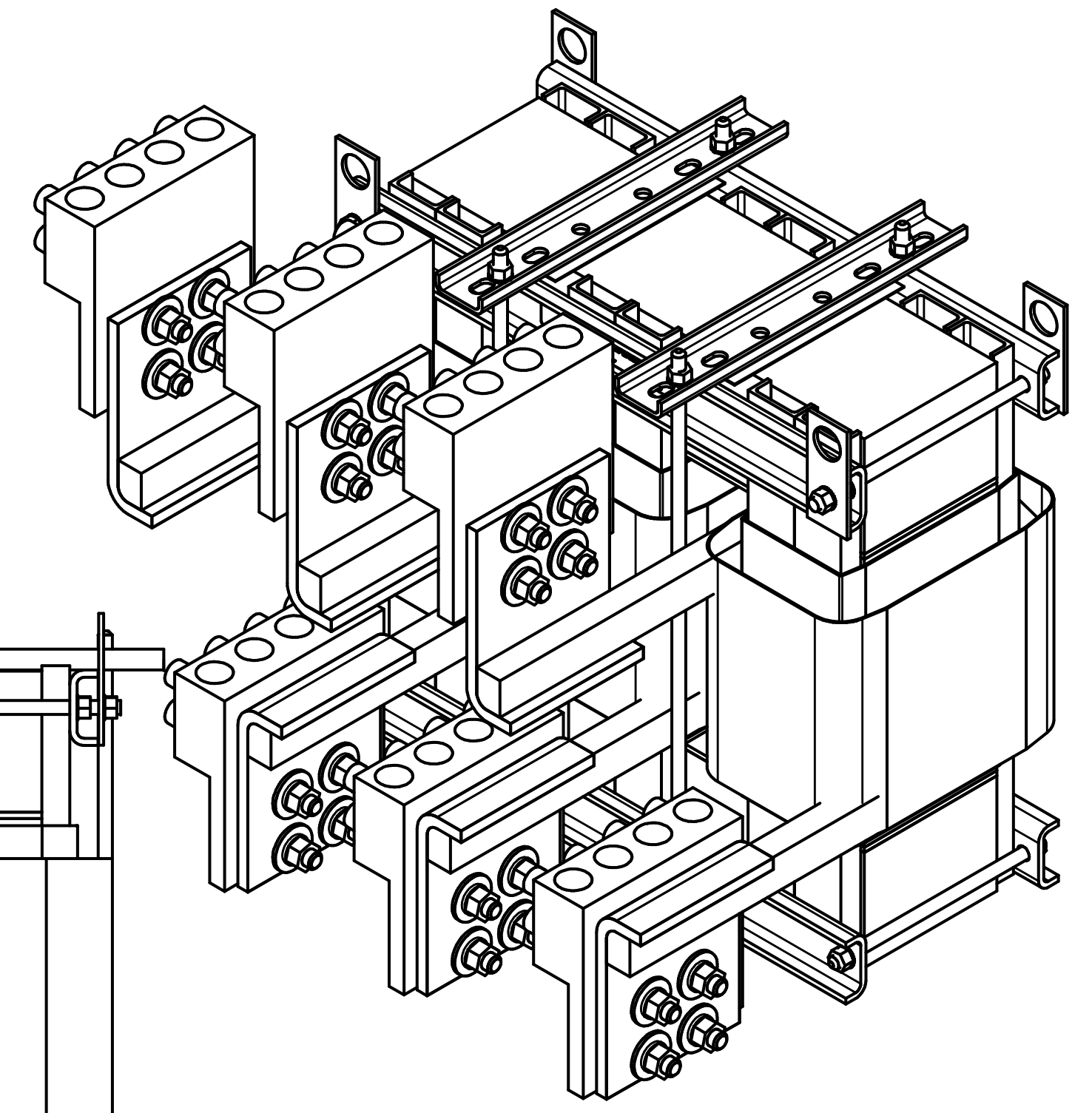


575 Rated Voltage, 600 Max Voltage, High Z, Impedance.

Part Number	Horsepower (HP)	Motor Amps (A)	Maximum Amps (A)	Inductance (uH)	Weight (LBS)	Losses (W)	Attached Lug Kit
KDRULY42H	1500	1440	1500	26.6	600	2985	SLK18



TCI (800) 824-8282 transcoil.com

TCI, LLC
 Germantown, WI, USA.
transcoil.com
 800-824-8282

KDRUL Drive Reactor
 KDRUL — Motor Amps —
 3PH, 50/60Hz, —V Rated, 600V Max, —A Max
 40C Amb Max, 155C Rise, RoHS
 Term Torque — lb-in

DATE CODE A1 A2 B1 B2 C1 C2

UL LISTED CE
 3RD PART. 2P. 1840

- Note:
1. UL file number: cULus Listed File E116124.
 2. KDR Drive Reactors Comply With The Thermal and Altitude Standards Set Forth by NEMA ST20-1992.
 3. For Terminal Torques And Wire Size See, KDR IOM Manual, Part Number 30895
 4. Material(s) Shall be RoHS Compliant
 5. Customer Is Responsible For Installation To Meet All National And Local Electrical Codes.

TCI, LLC CLAIMS PROPRIETARY RIGHTS IN THE MATERIAL HEREIN DISCLOSED. IT IS SUPPLIED WITHOUT PREJUDICE TO ANY PATENT RIGHTS OF TCI AND MAY NOT BE REPRODUCED OR USED TO MANUFACTURE ANYTHING SHOWN THEREIN WITHOUT WRITTEN PERMISSION FROM TCI.			TOLERANCES (EXCEPT AS NOTED)			TCI W132 N10611 Grant Drive Germantown, WI 53022		
			DECIMAL			KDRUL Y Frame, Copper Bus Reactor Drawing		
			XX ± .25			DRN BY DSW DATE: 3/5/18 107540DG		
			.XXX ± .10			SCALE: 1/4.5 APRVD: SIZE C SHT.4 OF 6		
			FRACTIONAL ± 1/16					
A Combined Drawings			3/5/18 DSW					
NO REVISION			DATE BY					
			ANGULAR ± 1°					